

# Lockers

en\_Lockers are cabinets designed to contain documents or personal belongings in the workplace. Doors can open through a badge that operates on an electronic lock. Different light signals indicate if the compartment is free or occupied. The doors can be customized in terms of finishes, such as the writable melamine, and can be equipped with identification plates.

it\_I lockers sono armadi destinati al contenimento di documenti o di oggetti personali sul posto di lavoro. L'apertura dell'anta può avvenire tramite una speciale serratura elettronica, per mezzo di tessera magnetica. Differenti segnali luminosi indicano se il vano è libero o occupato. Le ante sono personalizzabili in termini di finiture, quali il melaminico scrivibile, e possono essere dotate di targhette identificative.

fr\_Les "lockers" sont armoires multi-cases destinées à documents et d'objets personnels dans l'espace de travail. L'ouverture de la porte peut fonctionner par une serrure électronique avec une carte magnétique. Signaux lumineux différents indiquent si l'espace est libre ou occupé. Les portes sont personnalisables en termes de finitions, comme le mélamine avec la possibilité d'écrire, et elles peuvent être équipées de plaquettes identificatrices.





## Double sided locker

en\_Available in single or double sided version. Doors can be equipped with a slot that allows, with the compartment completely closed, the insertion, but not the withdrawal, of documents or communications.

it\_I contenitori lockers sono disponibili in versione monofacciale o bifacciale e le ante, possono essere dotate di una feritoia che permette, a vano completamente chiuso, l'inserimento, ma non il prelievo, di documenti o comunicazioni.

fr\_Les armoires multi-cases sont disponibles avec accès sur une face ou double face et les portes peuvent être équipées d'une fente qui permet, à vain complètement fermé, l'insertion de documents ou communications.

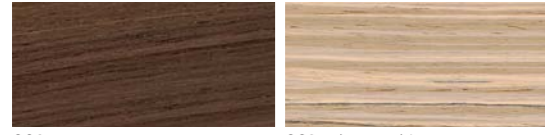


en\_Writable melamine doors.  
it\_Ante in melaminico scrivibile.  
fr\_Portes en mélamine avec  
la possibilité d'écrire.



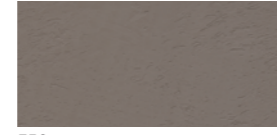
# Finishings

## WO - WOOD VENEER / LEGNI / PLACAGE BOIS



002 noce 062 zebrano chiaro

## CEM - CEMENT / CEMENTO / CIMENT



350 cemento

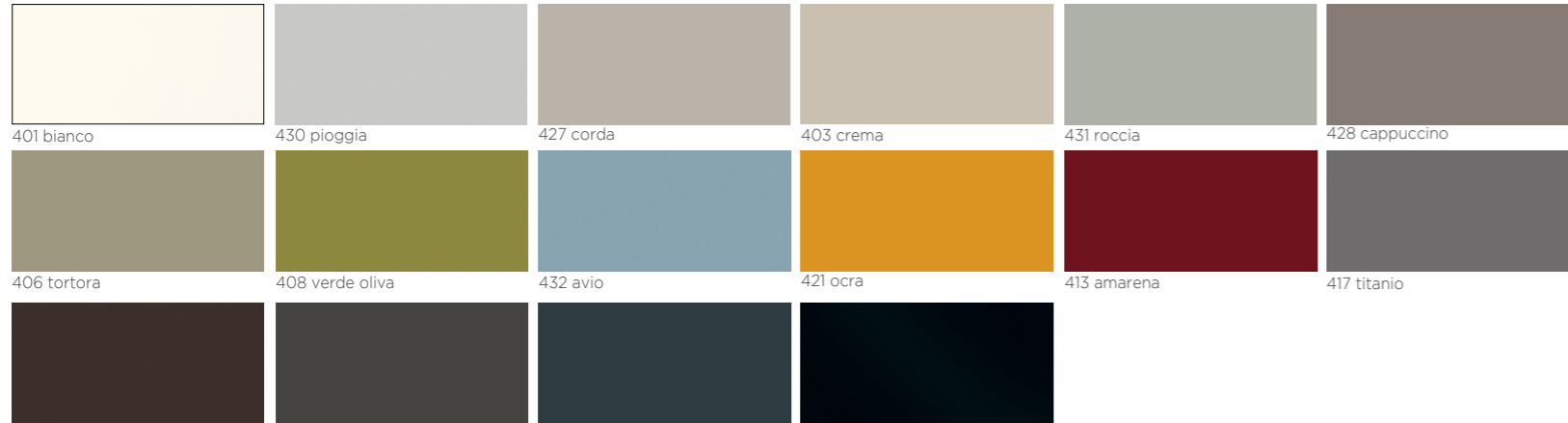
## GLS TRASP - CLEAR GLASS VETRO TRASPARENTE VERRE TRANSPARENT

## MEL - MELAMINE / MELAMINICI / MÉLAMINE

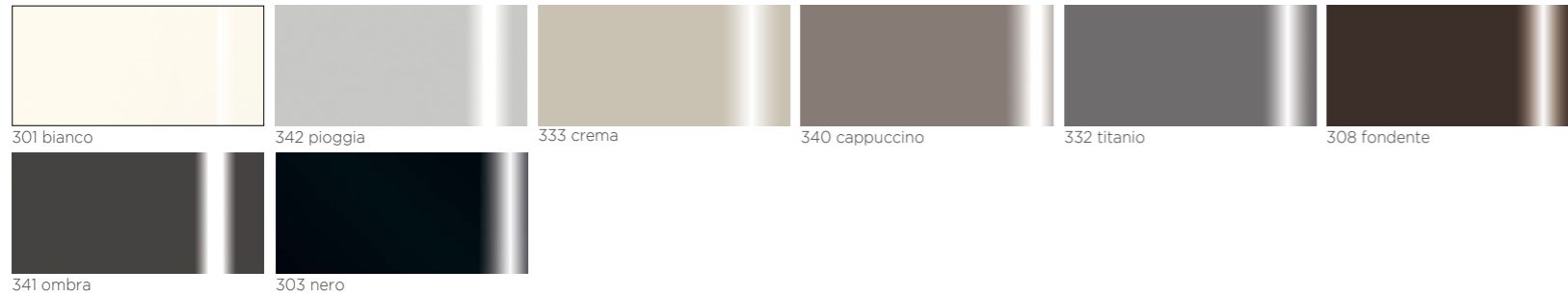


038 bianco 030 olmo 056 grigio silicio 040 nocino 561 trasparente

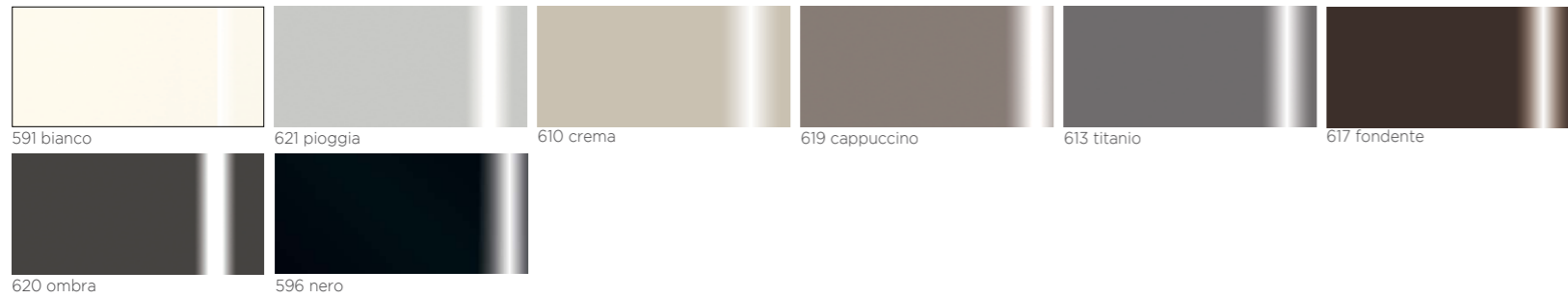
## LAC - MATT LACQUERED COLOURS / LACCATI OPACHI / LAQUÉ MAT



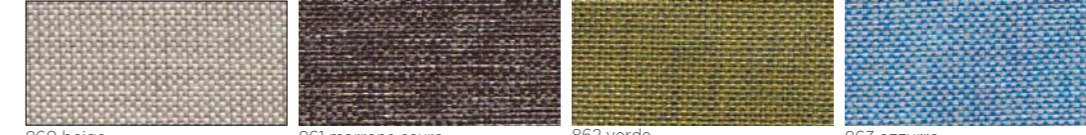
## LAC GS - GLOSSY LACQUERED COLOURS / LACCATI LUCIDI / LAQUÉ BRILLANT



## GLS COLOR - LACQUERED GLASS / VETRI LACCATI / VERRE LAQUÉ



## CAT. C - FABRIC ANGEL / TESSUTO ANGEL / TISSU ANGEL

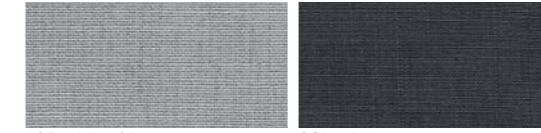


860 beige 861 marrone scuro 862 verde 863 azzurro

## CAT. D - FABRIC STOPFIRE / TESSUTO STOPFIRE / TISSU STOPFIRE



891 bianco 897 tortora 961 marrone 894 pistacchio 960 avio 890 ocra



893 grigio chiaro 962 grigio scuro

## CAT. H - FABRIC LUNA 2 / TESSUTO LUNA 2 / TISSU LUNA 2

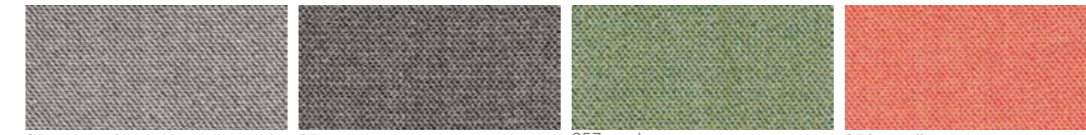


984 panna 982 marrone chiaro 986 moka 983 verde 987 avio 981 grigio chiaro



985 grigio scuro

## CAT. I - FABRIC CAPTURE / TESSUTO CAPTURE / TISSU CAPTURE



951 grigio chiaro 954 grigio scuro 957 verde 950 corallo

	WO	MEL	CEM	LAC	LAC GS	GLS COLOR	GLS TRASP	ALL FABRICS
<b>HINGED DOOR CABINETS</b>								
Liscia doors / filing drawers	•	•		•	•			
Linear doors / filing drawers		038		•				
Glass doors						•	•	
Finishing panels	•	•	•	•	•			
Backs	•	•	•	•	•			•
<b>SLIDING DOOR CABINETS</b>								
Sliding doors		•		•	•	•		
Finishing panels		•	•	•	•			
Backs	•	•	•	•	•			•