

outdoor

Lapala

Hand-woven low armchair / sillón bajo tejido

Lievore Altherr Molina 2015

C591 T



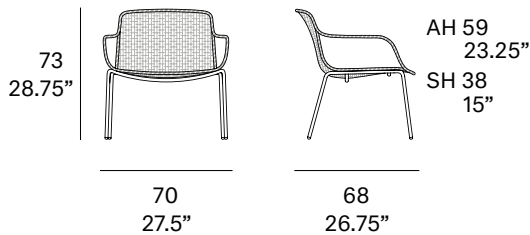
Armchair made of stainless steel tube. Hand-woven seat and backrest with high resistance rope 7 mm/0.27" thick. Legs made of lacquered stainless steel tube. Stackable.

Sillón fabricado en tubo de acero inoxidable. Asiento y respaldo tejidos a mano artesanalmente con cuerda de alta resistencia de 7 mm de sección. Patas fabricadas en tubo de acero inoxidable lacado. Apilable.

Shipment details

Qty	2 armchairs (1 box)
Volume	0,50 m ³ / 17.7 ft ³
Gross weight	26 kg / 57 lb
Net weight (x1)	11 kg / 24 lb

Item dimensions (width x depth x height)	70 x 68 x 73 cm 27.5" x 26.75" x 28.75"
---	--



frame / estructura

metallic finishes / metales



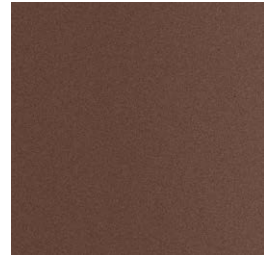
100 white



102 FT light grey
fine textured



111 FT graphite
fine textured



108 FT oxide
fine textured



109 FT champagne
fine textured



110 FT bronze
fine textured



113 FT sage
fine textured

outdoor

Rope / cuerda

polypropylene rope - Ø 7 mm / 0.27" thick



420 SPK
sand



422 SPK
concrete



424 SPK
ivy



426 SPK
turquoise



427 forest
green



423 SPK
oxide

polyester rope - Ø 7 mm / 0.27" thick



409 taupe



414 SPK
orange



415 SPK
dark orange



101 black