

indoor

Huma

Dining armchair with metal legs / sillón comedor con patas metálicas

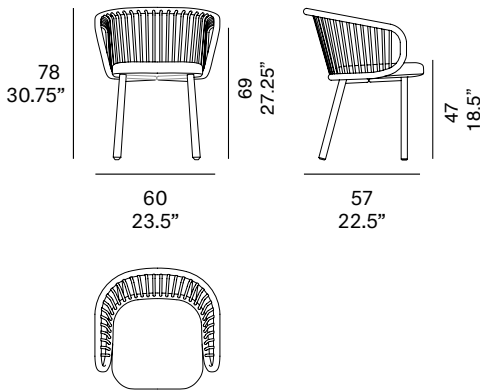
Mario Ruiz, 2015/2021

T070 M



Dining armchair with structure made of peeled and tinted natural rattan of 1.1" diameter. Backrest manufactured in peeled and tinted natural rattan of 0.4" diameter. Finished with a three step water-based coating (dye, base coat and top coat) highly resistant to solar radiation thanks to UV filters. Upholstered seat with metal legs. Possibility of customization through a wide variety of high performance technical fabrics. Plastic protective caps.

Sillón comedor con estructura en rattan natural pelado y tintado de 28 mm de calibre. Respaldo fabricado en rattan natural pelado y tintado de 10 mm de calibre. Acabado con recubrimiento en tres fases (tinte, fondo y acabado) con filtros UV que lo hacen altamente resistente a la radiación solar. Los acabados utilizados son en base al agua. Asiento tapizado y patas metálicas. Posibilidad de personalización mediante una amplia variedad de tejidos técnicos de altas prestaciones de uso. Tacos protectores de plástico.



Shipment details

Qty	1 dining armchair (1 box)
Volume	0,33 m ³ / 11.7 ft ³
Gross weight	15 kg / 33.1 lb
Net weight	11 kg / 24.3 lb
Box dimensions (approx.)	65 x 62 x 83 cm 25,5" x 24,5" x 32,75"
Item dimensions (width x depth x height)	60 x 57 x 78 cm 23.5" x 22.5" x 30.75"
COM (1, 40 - 1,50 m / 54"-59")	0,65 m / 0.7 yd

expormim

Expormim S.A.
Pol. Ind. Jaime I
46640 Moixent (Valencia) Spain
+34 962 295 144/5
export@expormim.com
www.expormim.com

Expormim USA LLC
(212) 204-8572
usa@expormim.com
www.expormim.com

1/6

Rattan

tinted



R10 natural



R03 noce



R06 verde oliva



R08 azzurro



R07 mogano



R24 cinder purple



R23 french grey



R05 grigio



R09 nero

lacquered



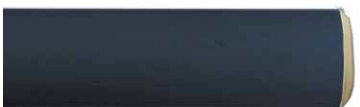
R02 bianco



R22 clay



R17 forest green



R16 navy blue



R14 japanese red



indoor

Legs / patas

metallic finishes / metales



102 FT light grey
fine textured



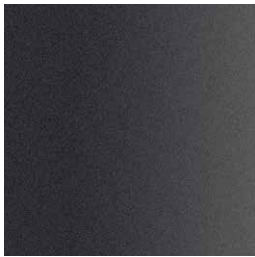
109 FT champagne
fine textured



110 FT bronze
fine textured



108 FT oxide
fine textured



111 FT graphite
fine textured

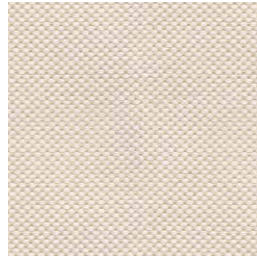
indoor

Cushions / confección

group 1 - natté Sunbrella®



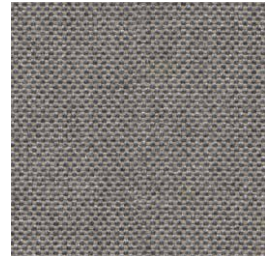
natté white



natté canvas



natté taupe chalk



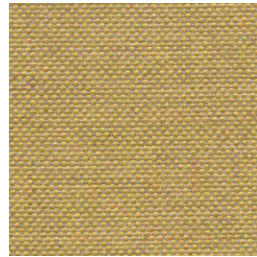
natté carbon beige



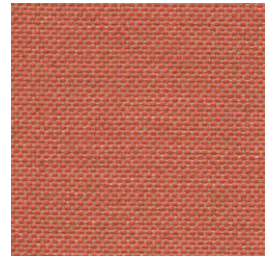
natté dark taupe



natté carbon sky



natté amber



natté flamingo

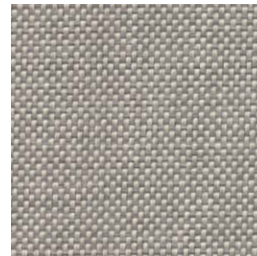
group 1 - dolce Crevin®



dolce 07



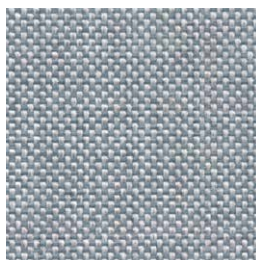
dolce 16



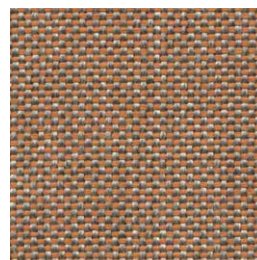
dolce 75



dolce 53



dolce 43



dolce 24



dolce 30

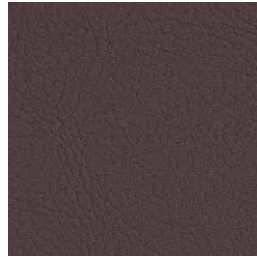
indoor

Cushions / confección

group 1 - valencia™ faux leather



valencia 1049



valencia 0020

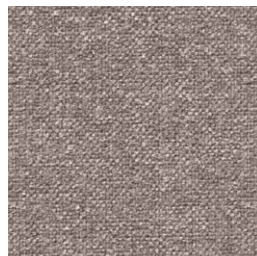


valencia 9035

group 2 - ito Crevin®



ito 05



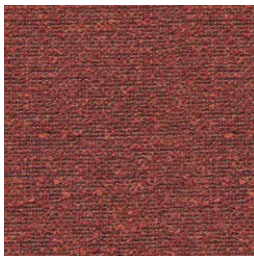
ito 18



ito 12



ito 71



ito 21



ito 20



ito 38



ito 45

group 2 - sacco Crevin®



sacco 02



sacco 05



sacco 11

expormim

Expormim S.A.
Pol. Ind. Jaime I
46640 Moixent (Valencia) Spain
+34 962 295 144/5
export@expormim.com
www.expormim.com

Expormim USA LLC
(212) 204-8572
usa@expormim.com
www.expormim.com

indoor

Cushions / confección

group 3 - ascendent Carlucci®



ascendent 090



ascendent 070



ascendent 071



ascendent 030



ascendent 093



ascendent 022



ascendent 040

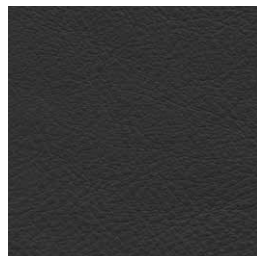
group 3 - elmosoft Elmo® leather



elmosoft 22024



elmosoft 93129



elmosoft 99999